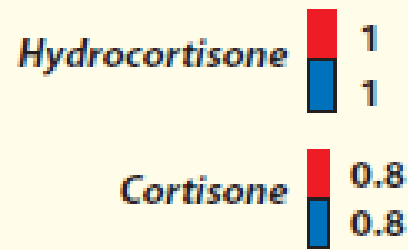


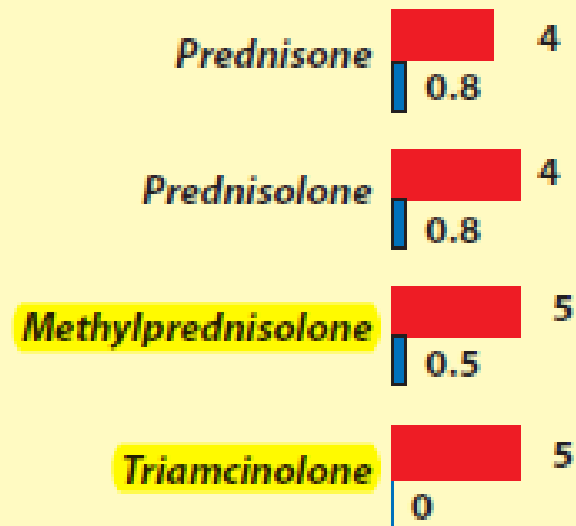
## Glucocorticoids

Short acting  
(1–12 hours)



Anti-inflammatory effect  
Salt-retaining effect

Intermediate acting  
(12–36 hours)



Long acting  
(36–55 hours)



## Mineralocorticoids



**IM**

**Triamcinolone**

**IV, IM**

**Betamethasone**  
**Dexamethasone**  
**Hydrocortisone**  
**Methylprednisolone**  
**Prednisolone**

**Inhaled and nasal sprays**

**Beclomethasone**  
**Budesonide**  
**Ciclesonide**  
**Flunisolide**  
**Fluticasone**  
**Mometasone**  
**Triamcinolone**



**Oral**

**Cortisone**  
**Dexamethasone**  
**Methylprednisolone**  
**Prednisone**



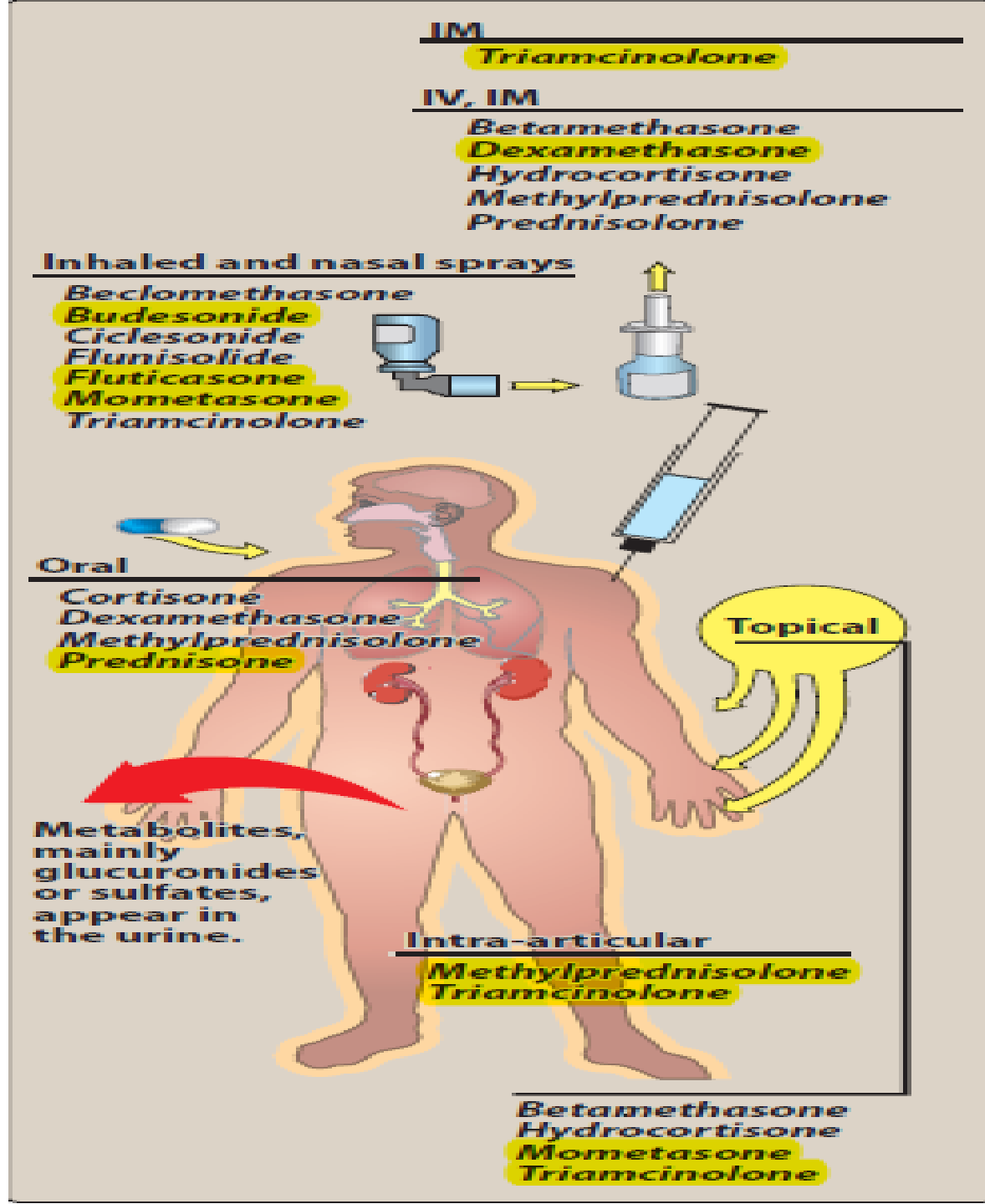
**Topical**

**Metabolites, mainly glucuronides or sulfates, appear in the urine.**

**Intra-articular**

**Methylprednisolone**  
**Triamcinolone**

**Betamethasone**  
**Hydrocortisone**  
**Mometasone**  
**Triamcinolone**



Decreased growth in children



Glaucoma



Centripetal distribution of body fat



Negative calcium balance

Osteoporosis



Impaired wound healing

Increased risk of infection



Increased risk of diabetes



Increased appetite



Euphoria  
Depression

Emotional disturbances



Hypokalemia



Hypertension



Peripheral edema



Dispense in tight  
containers as defined  
in USP/NF.

Store at 25°C (77°F);  
excursions permitted to  
15°–30°C (59°–86°F)  
[see USP Controlled  
Room Temperature].

Visit [www.Xenical.com](http://www.Xenical.com)  
for helpful weight  
loss information.

NDC 0004-0256-52

# Xenical<sup>®</sup>

(orlistat)

## 120 mg

Each capsule contains  
120 mg orlistat.

90 capsules

**R** only

Usual dosage: See  
Physician Package Insert.

Made in Ireland

Distributed by:  
**Roche Laboratories Inc.**  
Nutley, New Jersey 07110

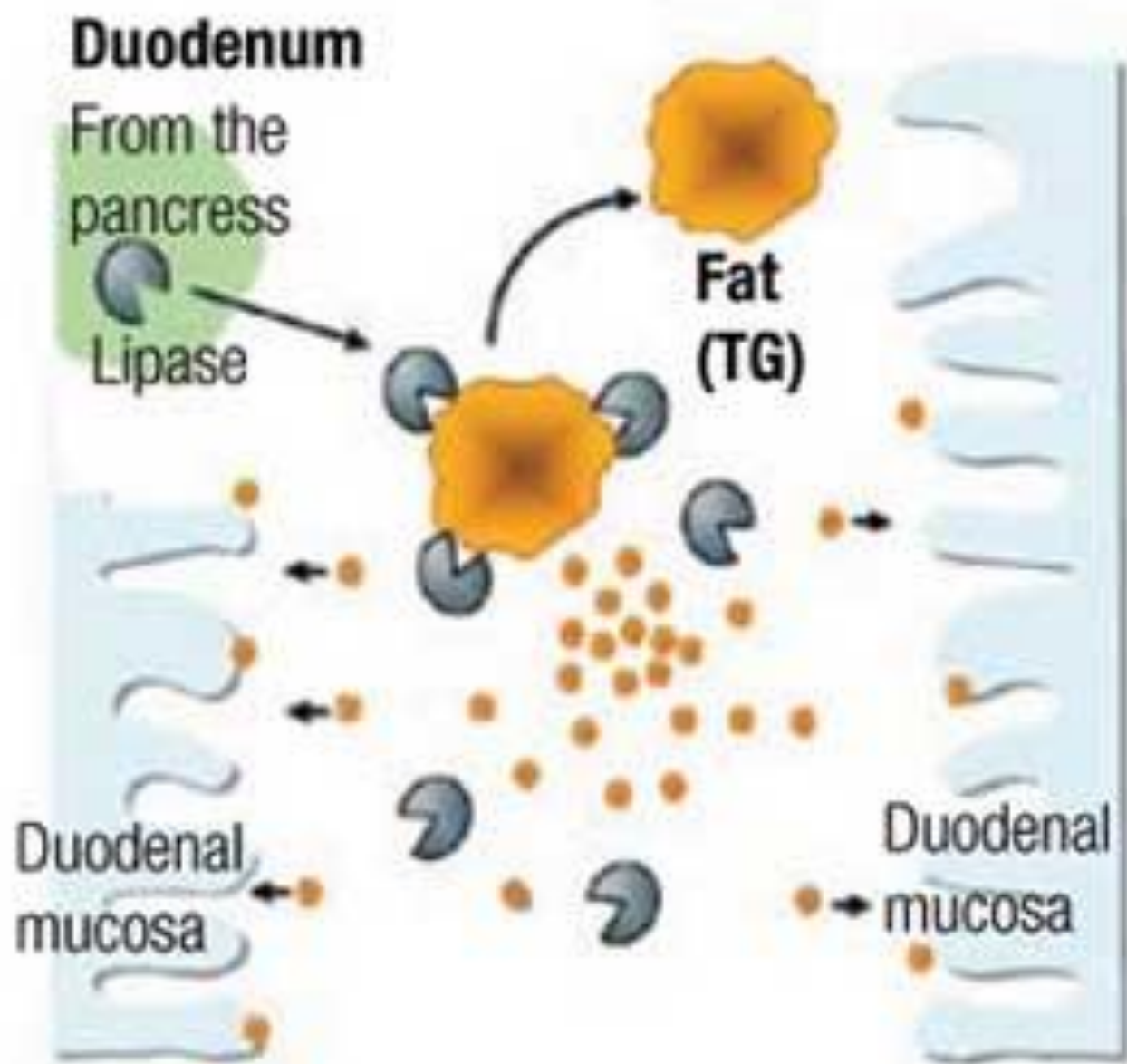
LOT

EXP.

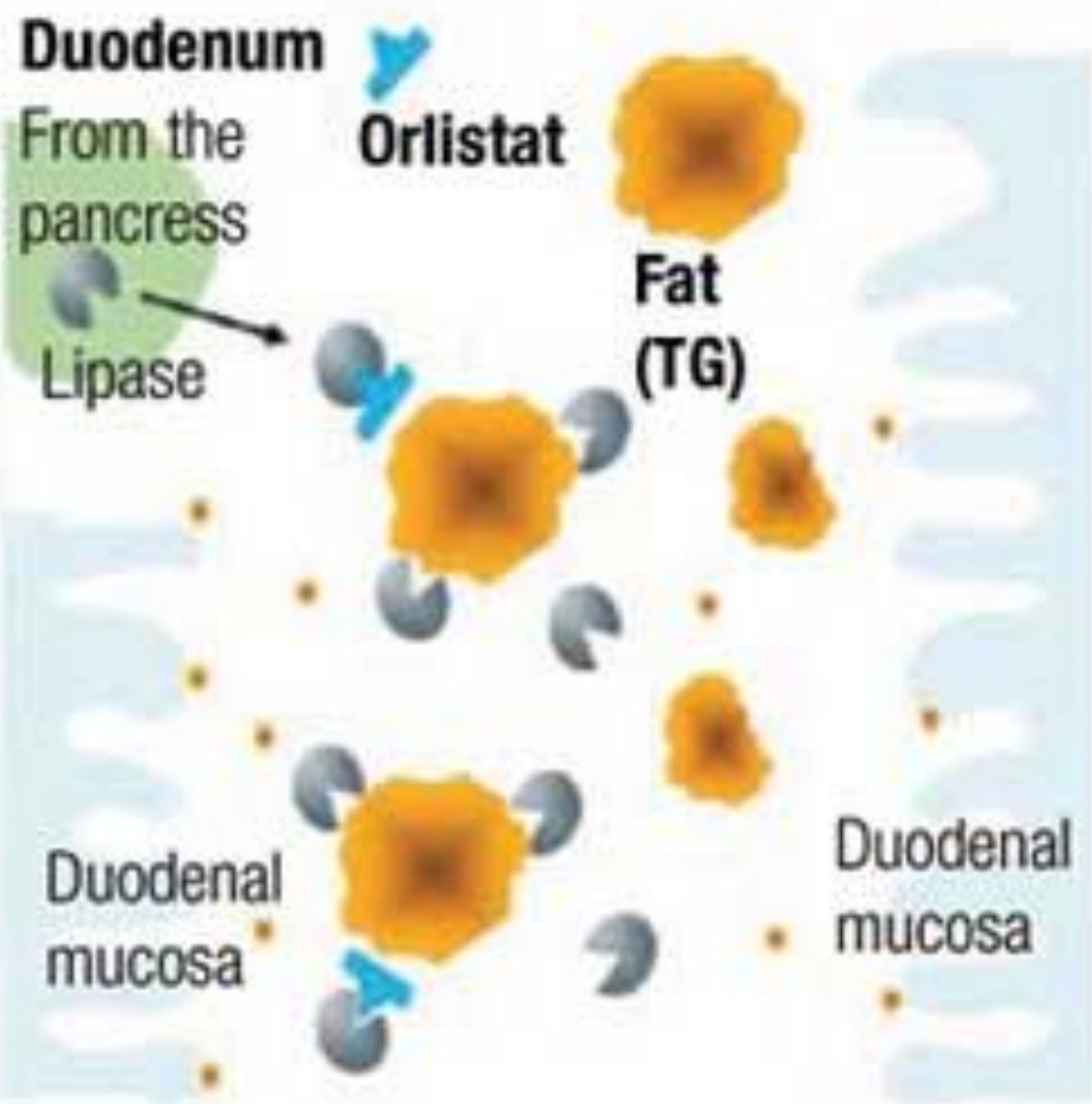
27899239



## Fat digestion



## Orlistat – Mechanism of action



Orlistat – mechanism of action.





## Phentermine

- Central nervous system stimulant
- Triggers stress response in brain to suppress appetite and boost energy



## Topiramate

- Anti-seizure, anti-migraine medication
- Increases fullness, makes foods taste less appealing and boosts metabolism



# Phentermine/Topiramate ER

- ▶ Brand name: *Qsymia*
- ▶ Approved in 2012 for long-term weight management
- ▶ Mechanism:
  - Phentermine: inhibits NE and dopamine release
  - Topiramate: mechanism on weight loss is not known
  - Increases satiety – appetite suppressant
- ▶ Dosing:
  - Start at 3.75/23mg daily x 2 weeks then ↑ to 7.5/46mg
  - After 12 weeks can ↑ to 11.25/69mg and 15/92mg

# Medications

## ■ Lorcaserin (Belviq)

- 10 mg bid
- selectively activates 5-HT<sub>2C</sub> receptors on anorexigenic neurons in the hypothalamus → decreases eating and promotes satiety
- 4.5% - 5.8% weight loss
- Side effects: headache, dizziness, fatigue, drowsiness, nausea, dry mouth, constipation
- Contraindicated pregnancy, caution CHF





## **Belviq<sup>®</sup> - lorcaserin Summary**

- **Belviq<sup>®</sup>, lorcaserin, is indicated for weight management in adults (BMI $\geq$ 30 or BMI $\geq$ 27 + 1 RF) as an adjunct to diet and exercise**
- **Potentially increases effects of other serotonergic agents and may increase substrates metabolized by CYP2D6**
- **Dosed 10mg po BID**
- **ADE include headache, dizziness, & fatigue**
- **Long-term data is lacking**

 **Saxenda**<sup>®</sup>

## **liraglutide injection**

6 mg/mL (5 × 3 mL pre-filled pen)

Solution for injection, pre-filled pen  
Subcutaneous use only

Store in a refrigerator (2° to 8°C). Do not freeze.  
After first use of the pen, store at a temperature not  
above 30°C or in a refrigerator (2° to 8°C).  
Do not store with needle attached.  
Keep the cap on in order to protect from light.  
Discard pen 30 days after first use.







Individual results may vary.

# Indication

- \* **SAXENDA** is a glucagon-like peptide-1 (GLP-1) receptor agonist indicated as an adjunct to a reduced-calorie diet and increased physical activity for chronic weight management in adult patients with an initial body mass index (BMI) of
  - 30 kg/m<sup>2</sup> or greater (obese) or
  - 27 kg/m<sup>2</sup> or greater (overweight) in the presence of at least one weight-related comorbid condition (e.g. hypertension, type 2 diabetes mellitus, or dyslipidemia).